



VISION BECOMES REALITY

Planning Mannheim's new
energy-efficient
Glückstein-Quartier

24 September 2013

CASCADE study visit

Dipl. Geographer Martina Block

Project Coordination Glückstein-Quartier



**GLÜCKSTEIN
QUARTIER**

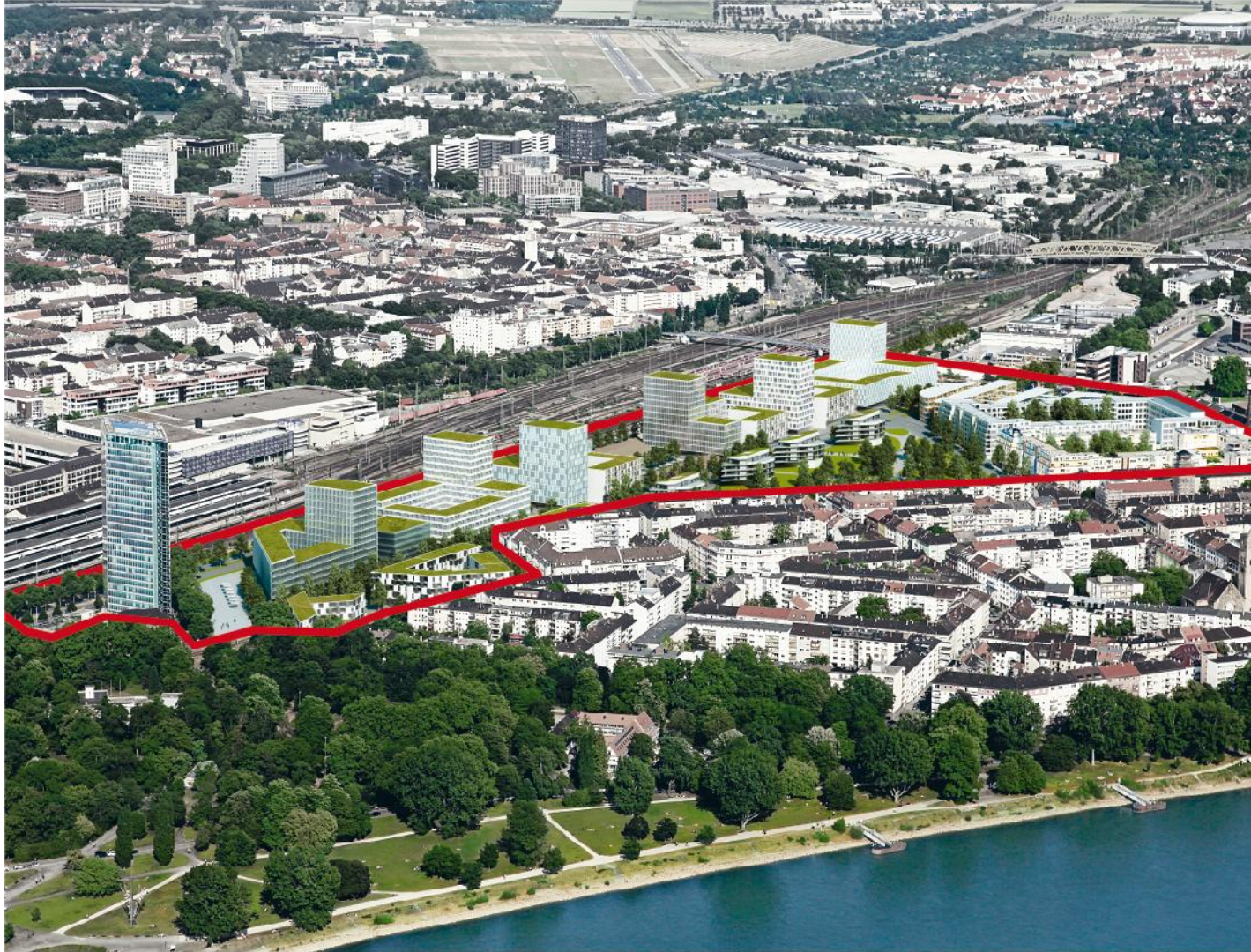
Vision wird Realität



1.

GLÜCKSTEIN- QUARTIER FACTS AND FIGURES

1 | Glückstein-Quartier – Facts and Figures



MODEL SIMULATION URBAN PLANNING DESIGN

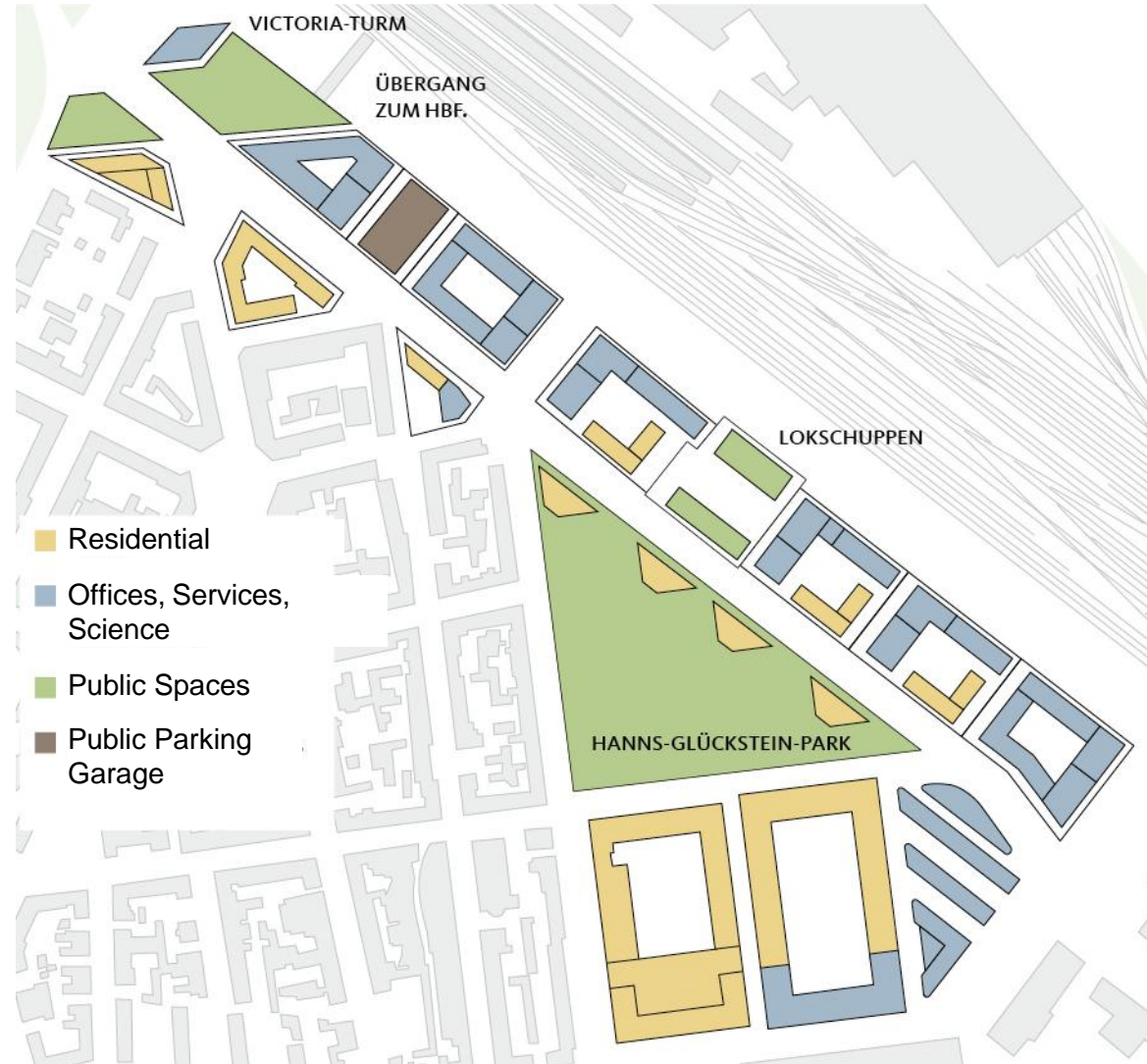
Total area	330,000 sqm
Building plots	100,000 sqm
Completed	36,000 sqm
To be developed	64,000 sqm

1 | Glückstein-Quartier – Facts and Figures

USE OF BUILDINGS *

Offices, services, science	169,000 sqm
750 new apartments	91,000 sqm
Green space and open areas	29,000 sqm
Dining and culture	2,000 sqm

* Gross Floor Area



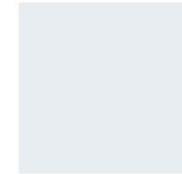
1 | Glückstein-Quartier – Facts and Figures



MODEL SIMULATION
URBAN PLANNING
DESIGN

THE OBJECTIVES FOR THE PROJECT

- Integrated urban district (no „retort“)
- A mix of office, services, science and residential uses
- Some thousand workplaces and 1,500 inhabitants
- High quality standards of urban planning / architectural competition for each new building
- Attractive green spaces
- High climate protection standards (own climate protection guidelines of the City of Mannheim)
- Endangered species protection (e. g. relocation of wall lizards)





2.

CLIMATE PROTECTION MEASURES



The following standards are included in the land sale contracts between the City of Mannheim and the building owners:

- Energetic standards:
The current national standards “EnEV 2009” have to be exceeded by at least 30% (primary energy consumption and transmission heat losses)
- All new buildings must be connected to district heating
- Innovative district heating-system using the return of the grid (supply: 70° C, return: 40° C)
- highly efficient cooling machines

Other requirements (land-use plan)

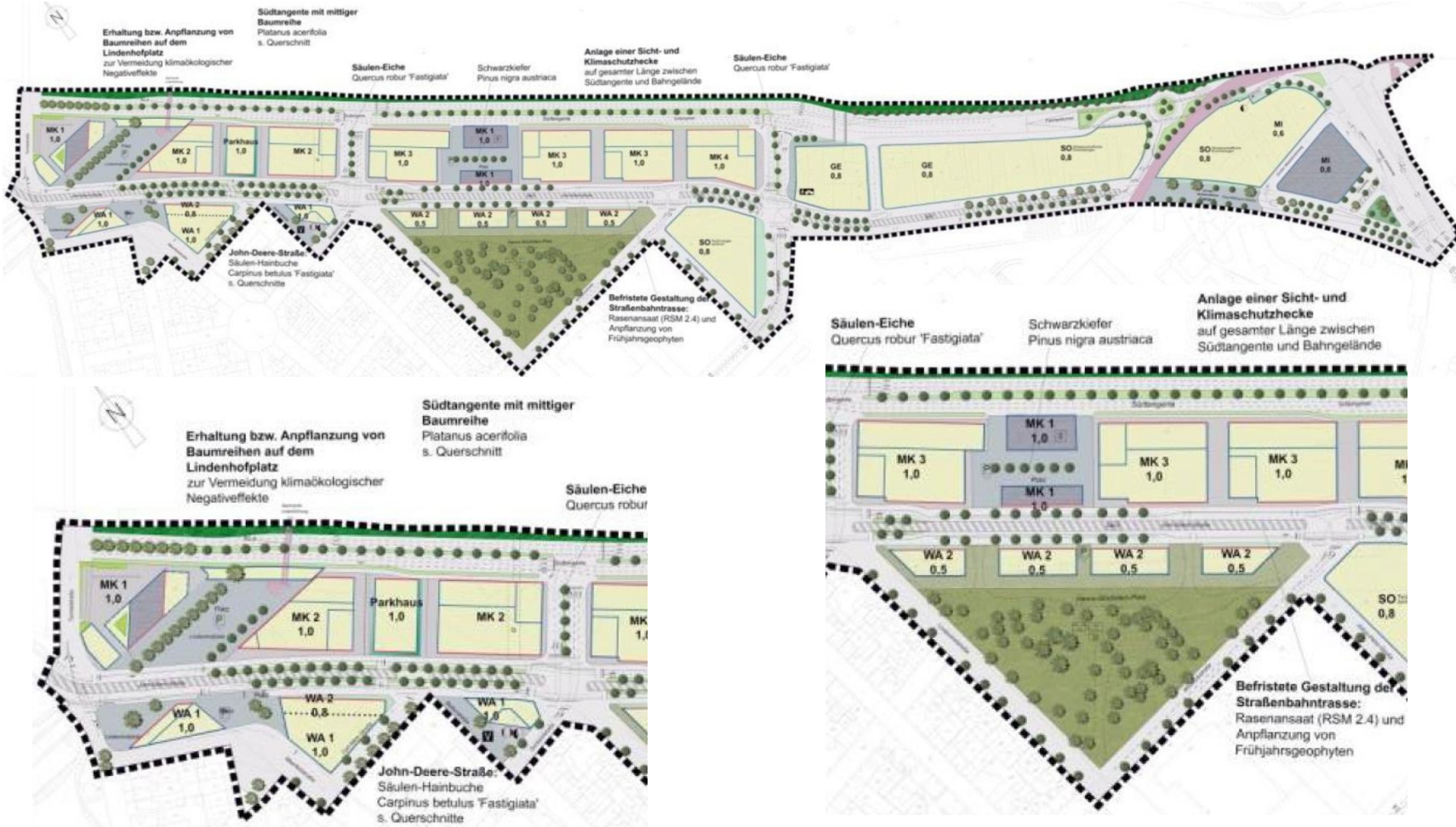
- All roofs have to be greened

PUBLIC MULTI-STOREY PARKING



- ca. 700-800 parking spaces
- 50 bike parking spaces
- Charging stations for electric cars
- solar panels on the top of the roof
- extensive roof greening
- direct walkway for pedestrians to the central railway station

Approx. 420 new trees will be planted





ATTRACTIVE GREEN SPACES

The Hanns-Glückstein-Park will be extended from 1,2 to 2,2 hectares



THANK YOU
FOR YOUR
ATTENTION

Department IV
Planning, Building, Traffic, Sports

Project Coordination
Glückstein-Quartier

Martina Block
Telefon + 49 (0) 621 293-5509
martina.block@mannheim.de
www.glueckstein-quartier.de



**GLÜCKSTEIN
QUARTIER**

Vision wird Realität